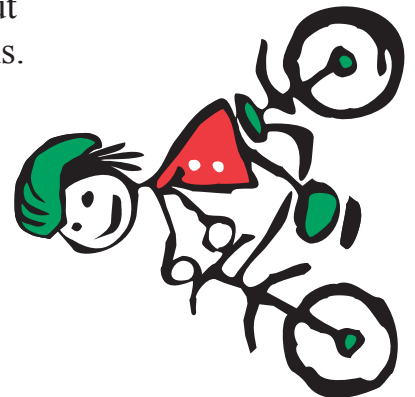
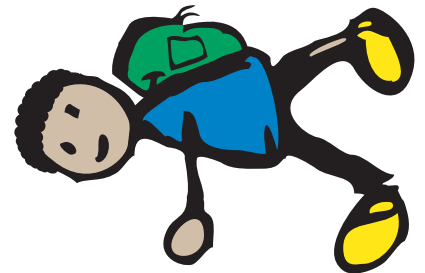
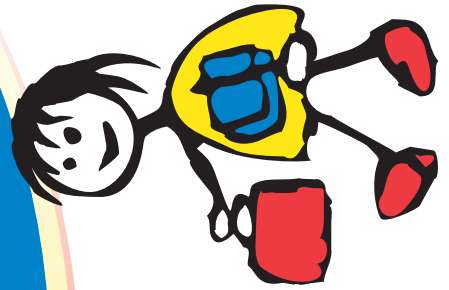


You are invited to participate

**J. G. Smith Elementary**  
**Safe Routes to School**  
**Walkability Assessment**

**THURSDAY, FEB. 25, 2010**  
**2:00 - 5:00 PM**

**J. G. SMITH ELEMENTARY**  
**School Media Center**  
**210 Lamara Dr.**  
**Savannah, GA**



The Walkability Assessment is a casual "walk about" and discussion about Safe Routes. Please join us to lend your expertise and voice your concerns. Your input is valuable and appreciated!

Please dress comfortably. We will be observing school dismissal and taking a short walk around the school and surrounding community.

*Presented by the J. G. Smith Elementary School Wellness Committee and the Georgia Safe Routes to School Resource Center.*

*GIS and resources provided by the Coastal Regional Commission.*

RSVP by Monday, February 22, 2010.  
(404) 849-3141 or [Patti@SafeRoutesGA.org](mailto:Patti@SafeRoutesGA.org)

QUESTIONS? Contact Patti Sistrunk  
[Patti@SafeRoutesGA.org](mailto:Patti@SafeRoutesGA.org) or (404) 849-3141

For more info about the GA Safe Routes Program go to [www.SafeRoutesGA.org](http://www.SafeRoutesGA.org)

**See you there Thursday, Feb. 25, 2010**



**Georgia**  
GEORGIA DEPARTMENT OF TRANSPORTATION